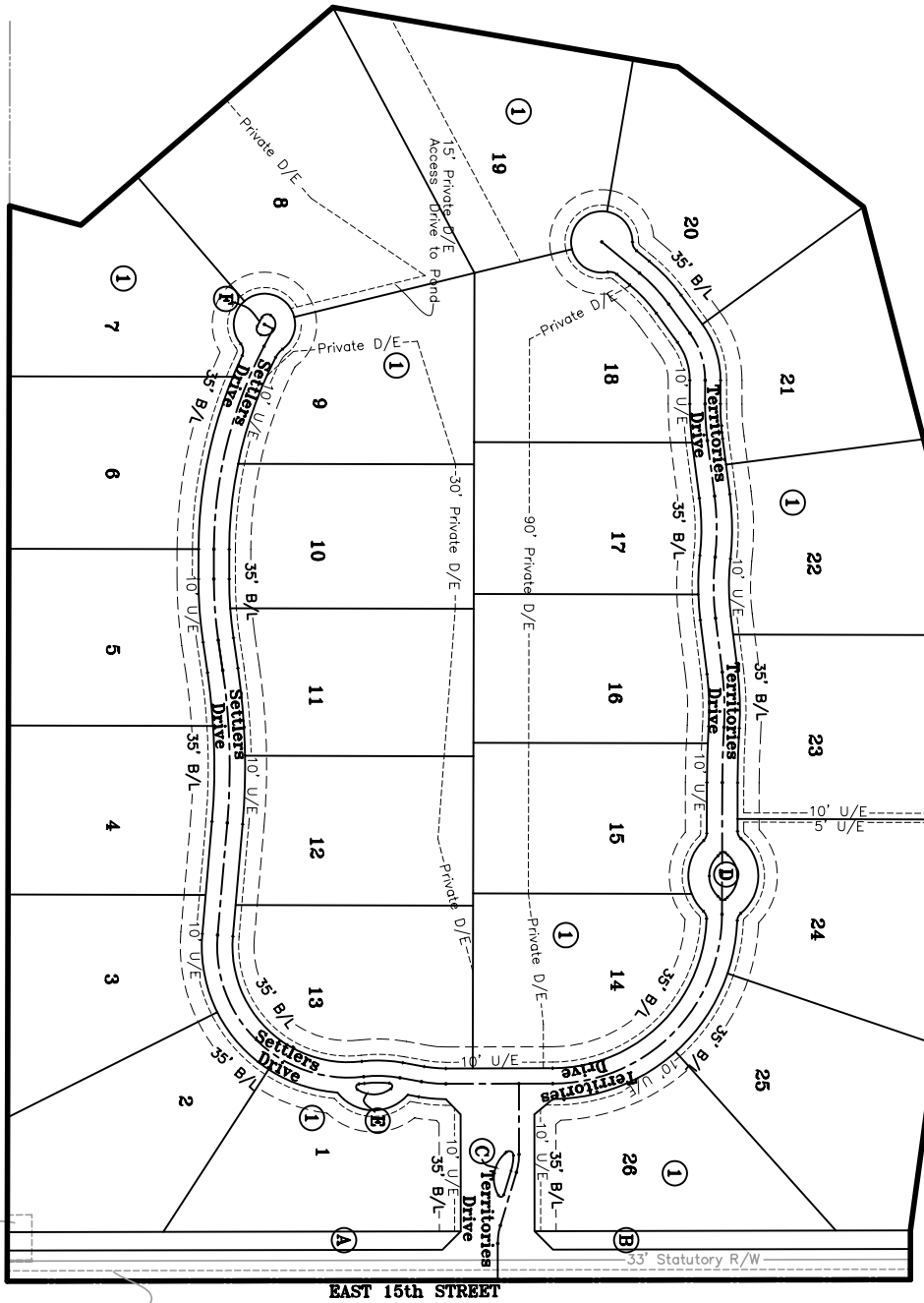


AN ADDITION TO THE CITY OF EDMOND
 A Part of the SE 1/4 Sec. 33, T14 N, R2W, I.M.
 OKLAHOMA COUNTY, OKLAHOMA

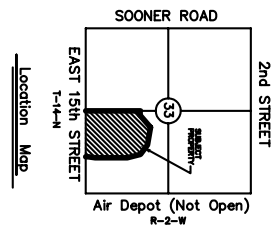
SALES PLAT TERRITORIES



40'x75' Water Well Easement
 Book 9425 Pages 954

17' ONG Easement
 Book 6322 Pages 1445-1446

SALES PLAT ONLY
 Verify All Lot Dimensions, Easements
 & Building Line Locations On Final
 Plat As Filed Of Record



ISCH & ASSOCIATES, INC.
 3540 S Boulevard, SUITE 205 - EDMOND, OKLAHOMA 73013
 405 - 348 - 1183
 Certificate Of Authorization No. 1139 Exp. Date: 6-30-09

**SALES PLAT
 TERRITORIES**
 AN ADDITION TO THE CITY OF EDMOND
 A Part of the SE 1/4 Sec. 33, T14 N, R2W, I.M.
 OKLAHOMA COUNTY, OKLAHOMA